



Saville Road, London, W4 5HG

£599,950

**WHITMAN & CO.**

SALES · LETTINGS · COMMERCIAL

- Light and spacious split-level apartment
- Two beds/two baths
- Reception room and separate dining room
- Wood floors throughout
- Close to numerous amenities
- Quiet cul-de-sac position

Tenure - Leasehold + share of freehold  
 Lease Length - 106 Years remaining  
 Ground Rent - Peppercorn  
 Service Charge - £350 pa  
 Local Authority - Ealing  
 Council Tax - Band E

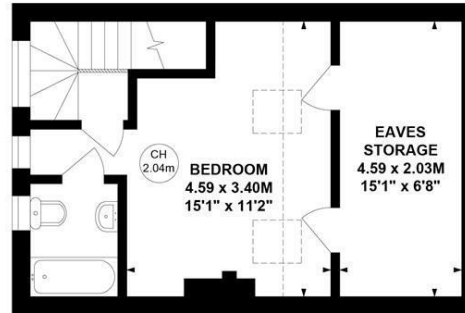
## THE PROPERTY

An exceptionally light and spacious split-level apartment located on this quiet cul-de-sac within a short walk of Chiswick High Road's extensive facilities. The flat totals 933 sqft with the accommodation comprising a 15'3 reception room, primary bedroom suite with ensuite bathroom, second large double bedroom, dining room, galley kitchen, newly fitted shower room, wood floors throughout and extensive eaves storage. Saville Road is close to a number of parks, gastro pubs and shops with Chiswick High Road's more extensive amenities easily accessible. Transport links include Turnham Green and Chiswick Park tube stations, South Acton Overground station, local bus routes and the A4/M4 for routes in and out of London. No onward chain.

## Saville Road, W4

Approximate Gross Internal Area  
**86.72 sq m / 933 sq ft**  
 (Including Eaves Storage)  
 Eaves Storage  
**9.31 sq m / 100 sq ft**

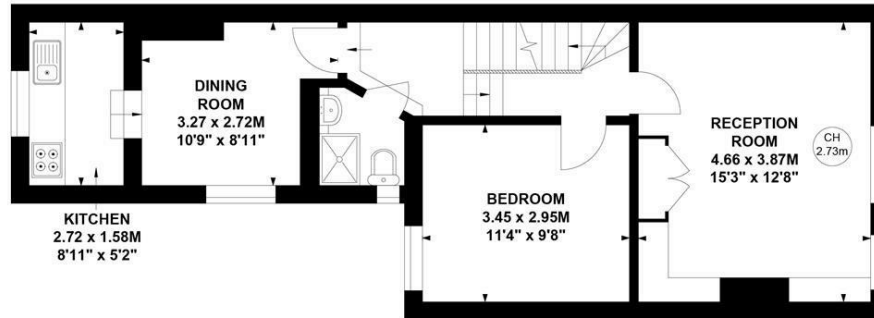
Key :  
 CH - Ceiling Height



Second Floor



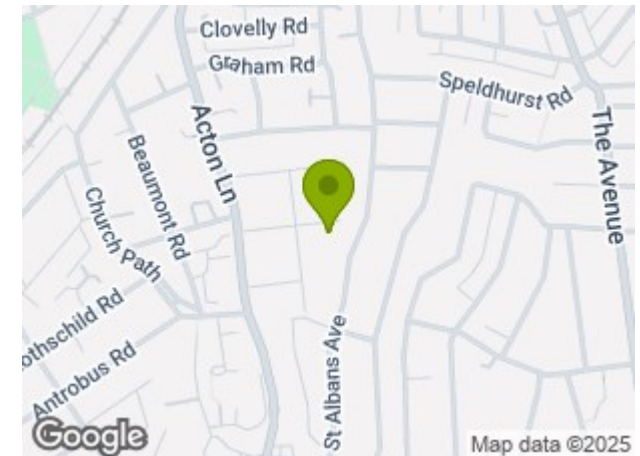
Ground Floor/  
 Entrance



First Floor

Not to scale, for guidance only and must not be relied upon as a statement of fact.  
 All measurements and areas are approximate only

## SITUATION



5-7 Turnham Green Terrace, Chiswick, London, W4 1RG

Tel 020 8747 8800

E-mail [sales@whitmanandco.com](mailto:sales@whitmanandco.com)

Website [www.whitmanandco.com](http://www.whitmanandco.com)



MISREPRESENTATION ACT 1967

Whitman & Co. for themselves and for the vendors give notice that these particulars do not constitute any part of, an offer of contract. All statements contained in these particulars are made without responsibility on the part of Whitman & Co. or the vendor. None of the statements contained in these particulars is to be relied upon as statements or representations of facts. Any intending purchaser must satisfy himself by inspection or otherwise as to the correctness of each of the statements contained in these particulars. The vendor does not make or give, and neither Whitman & Co. or any person in their employment has any authority to make or give, any representation or warranty whatever in relation to the property.